

modular DRAWER SYSTEM

Configuration Instructions



2101



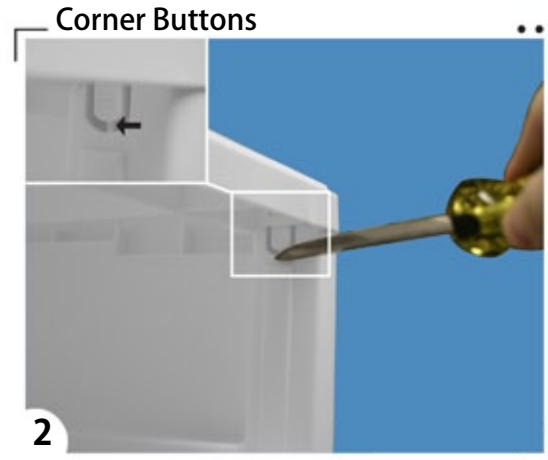
2110



2112



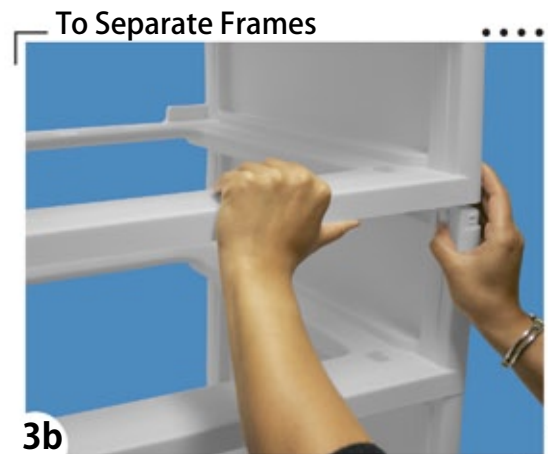
Remove drawers



Before removing lid or separating frames, use a screwdriver to cut connecting tab on each button



Remove lid by pressing each corner's button while lifting lid



Separate frame by pressing each corner's button while lifting above frame



modular DRAWER SYSTEM

Configuration Instructions



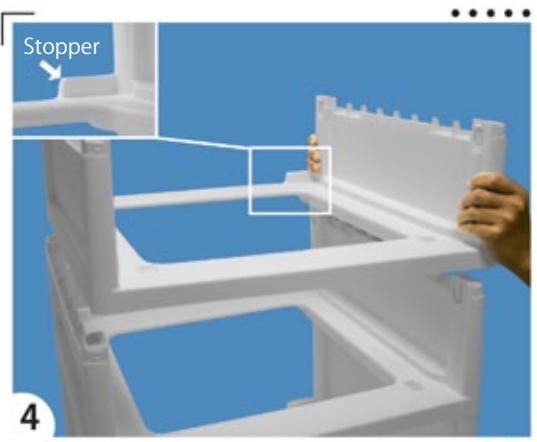
2101



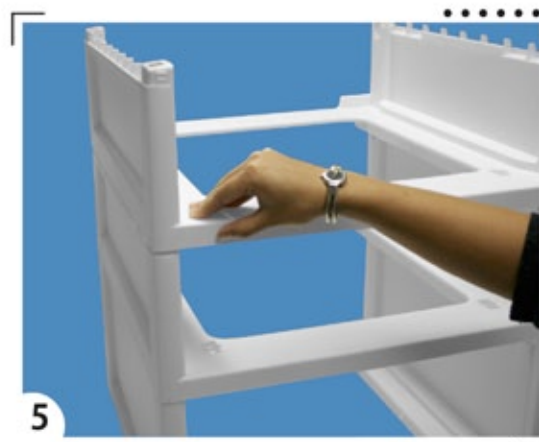
2110



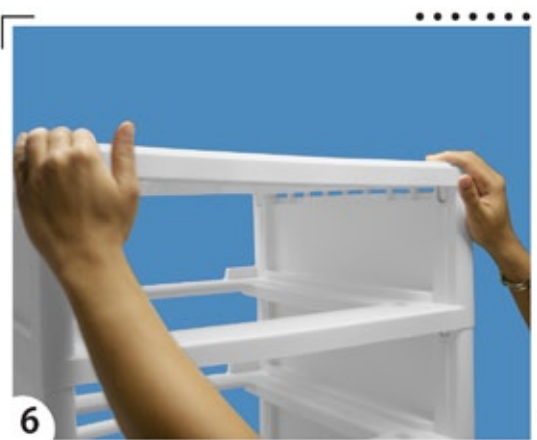
2112



Assemble desired frame configuration ensuring drawer stoppers are in back and each frame is aligned



Press down each corner until all corners click



Replace lid with Sterilite logo in front, press down each corner until all corners click



Replace drawers

